



“Renewable solutions for a finite planet since 1973”

J.P. Saylor & Associates, Consultants Ltd.

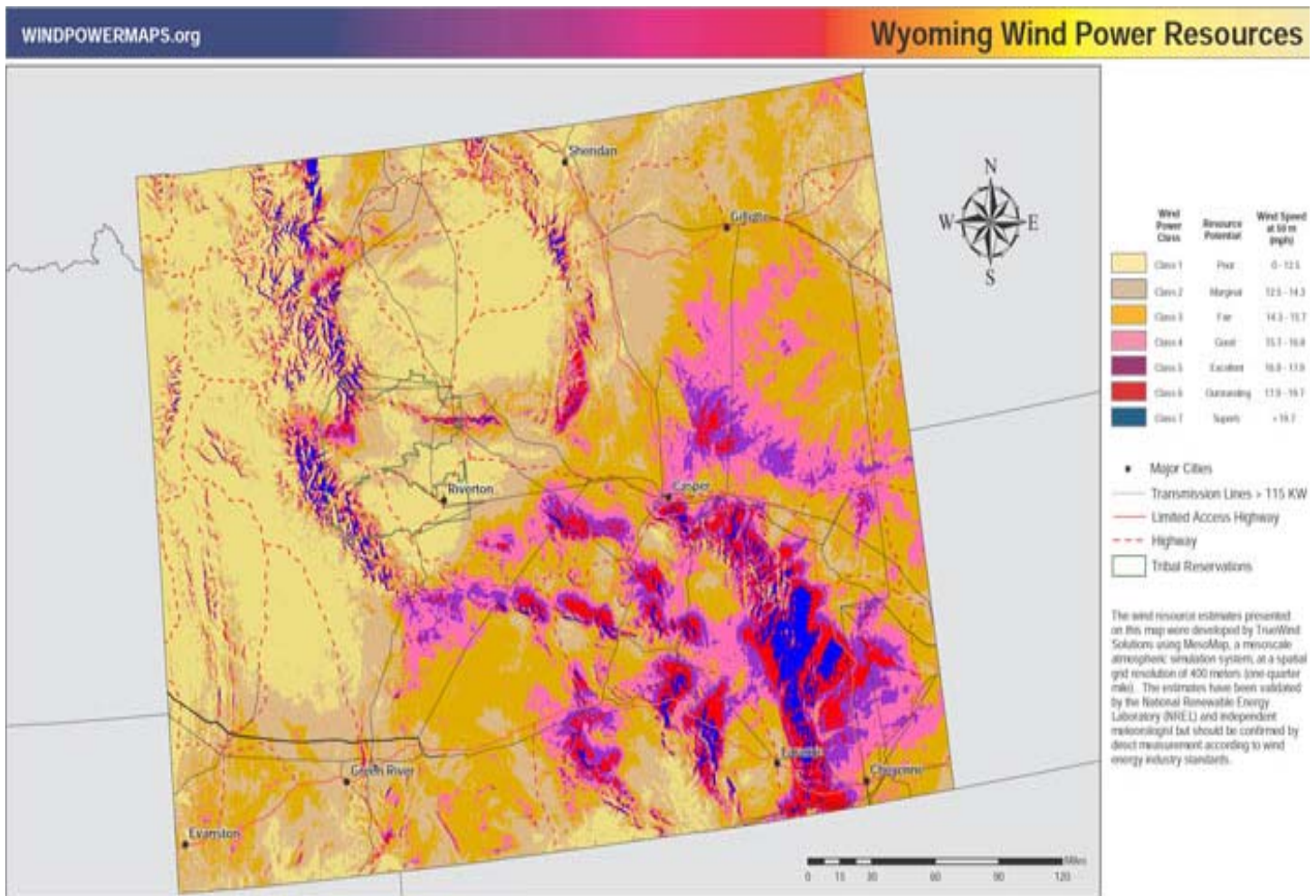
P.O. Box 41515, Des Moines, Iowa 50311, USA
 Tel: 515.255.4970, Fax: 515.255.4925

United States - Denmark

Windturbine Consultation, Engineering, Sales & Installation

Contact Us

Wind Resource Map Wyoming @ 50 m



Project Sponsors

NREL, the Bonneville Power Administration, Northwestern Energy, the Wyoming Business Council, enXco, the Northwest Power Planning Council, Ziko Renewable Energy, Kikkidat County, EnerWind, ABB, Renewable Energy Systems (USA) Inc., Chelan Public Utility District, Idaho Power, Westland, Inc., WSACAA Energy Project, Ventas, Jones & Skates, CH2M Hill, Suckon Energy, Northwest Wildlife Consultants, Inc., and Geko Wind Power.

For more information see www.windpowermaps.org